

OPENING THE WINDOW

1. Push button on the handle and rotate handle to unlock as shown in *Figure A*.
2. Push acrylic panel outwards. Panel will click at different positions of opening. 300mm tall windows have two opening positions while all others have three. (*Figure B*)

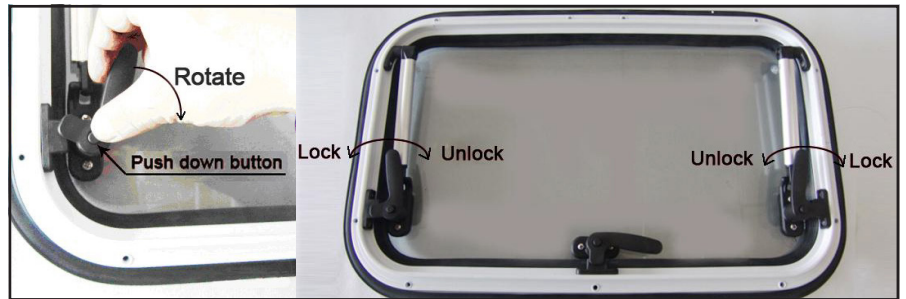


Figure A

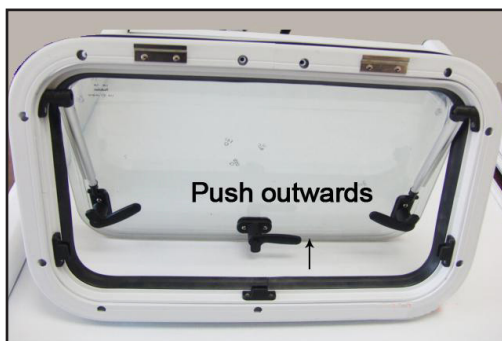


Figure B

CLOSING THE WINDOW

1. Push the acrylic panel outwards a bit to release from the lock position, then pull inwards to the full lock position as shown in *Figure B & C*.
2. Rotate Handle to lock the window. Handle will click once in lock position.

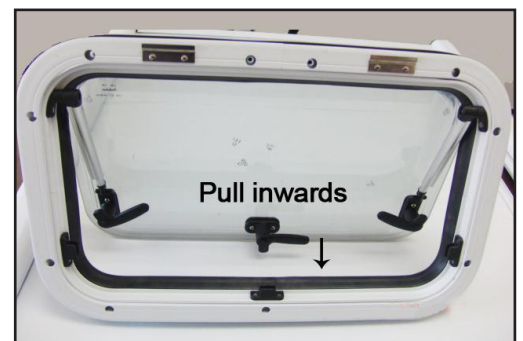


Figure C



Figure D

IMPORTANT NOTE:
 All windows are equipped with a semi-lock position, which provides ventilation while preventing wind damage while parked. (*Figure D*) Windows **MUST** be fully closed and all handles must be in the Full Lock position while traveling.

BLIND FEATURES & FUNCTIONS

- Blind prevents light entry & provides privacy
- Screen protects against bugs entering your RV.
- With screen & blind disconnected and window unlocked and open, it will act as an Emergency Exit.

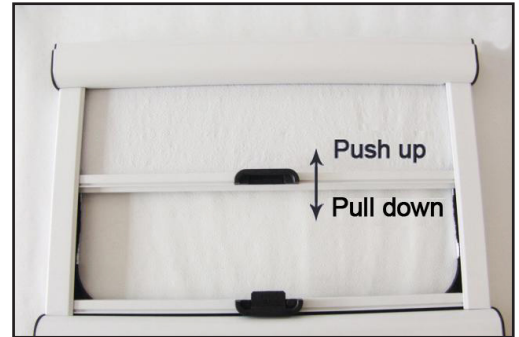


Figure E

INSTRUCTIONS:

The center handle can be pushed up or down to any desired position. (See Figure E) The blind and screen can be locked together by joining them together with the center latch. Once locked together, they can be positioned as needed. (See Figure F)

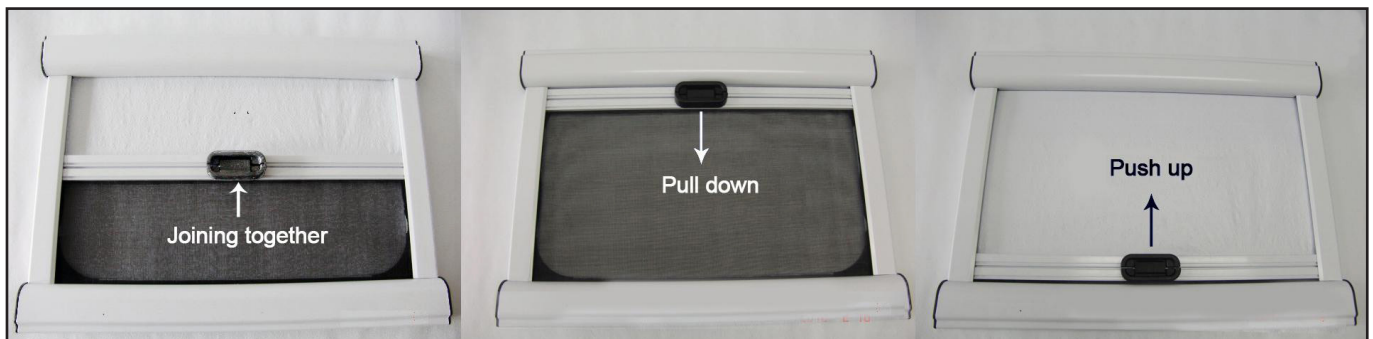


Figure F

To unlock, press down on the catch on the handle. (See Figure G)



Figure G

POTENTIAL ISSUE - BLIND NOT RETRACTING PROPERLY

After unlocking the window blind/screen latch, the window blind will not retract properly onto the spool when attempting to push into the open position. This adjustment will work on the screen end as well, if the screen will not retract back into position. Simply flip the frame so the screen spool is facing upward and follow the steps to increase or decrease the spool tension as desired.

SOLUTION

1. Remove the inner window frame according to the installation instructions.

2. Use a knife or sharp object to remove the hex-plug at the corner of the end cover. (See Figure H)

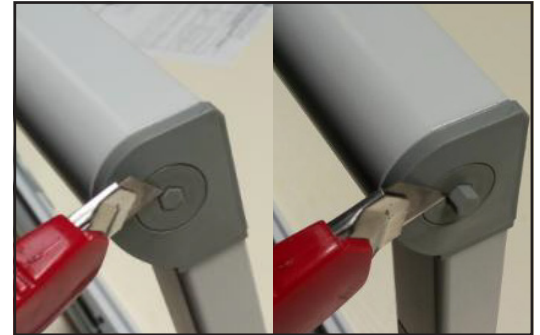


Figure H

3. Use the hex-wrench to adjust the tension on the pre-tightened shaft through the end cover. Unscrew the round cover/stopper by rotating counter-clockwise 2-3 turns. Once the round cover unscrews, you can adjust the tension by continuing to rotate the hex-wrench counter-clockwise to increase tension or clockwise to reduce the tension. Once the tension is adjusted properly, push in on the wrench as it rotates clockwise. The cover/stopper will screw itself back into place. Check to see if the adjustment allows the window blind to retract back onto the spool. Re-adjust as needed to resolve issue. (See Figure I)

4. Re-insert hex-plug after adjustment. (See Figure J)



Figure I



Figure J

POTENTIAL ISSUE - BLIND DISLODGED FROM TRACK

During use, the blind/curtain portion can potentially pop out of it's track inside the window frame. This can be caused by pushing on the blind, or a strong wind blowing against the blind. The blind cannot re-spool properly if this has occurred. (See Figure K)

SOLUTION

1. Pull the blind down to the fully closed position. (See Figure L)
2. Use your hand, or a plastic squeegee with no sharp edges to slide along the guide track. Push the blind back into the track slot so it is fully inserted from top to bottom and seats properly without wrinkles. Repeat this step for the other side if both sides are out of the track slot. (See Figure H)
3. Slide blind up into the open position when finished to ensure smooth operation.



Figure K

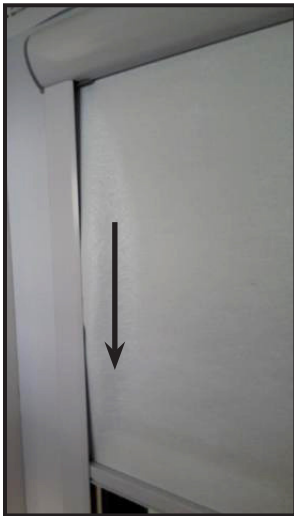


Figure L

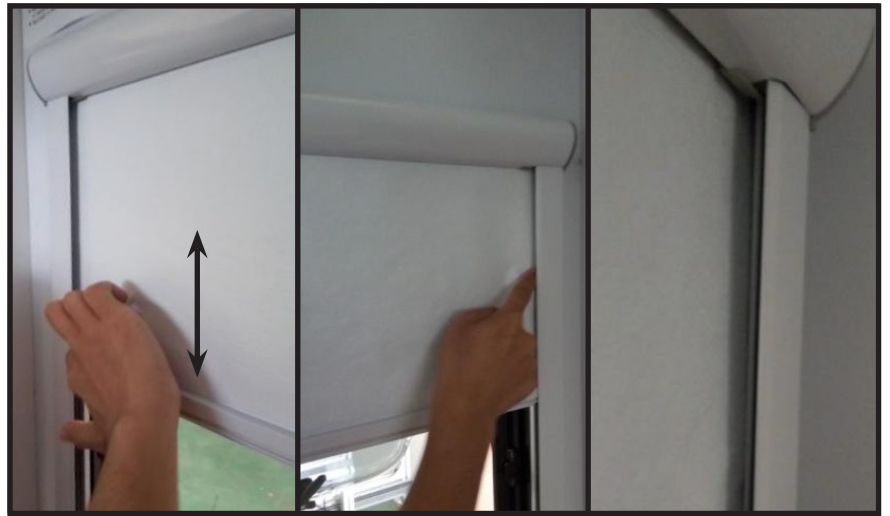


Figure J