

IMPORTANT: If water is allowed to freeze in the system, serious damage to the plumbing and pump may occur. Failures of this type will void the warranty. The best guarantee against damage is to follow the instructions below for winterizing your unit against freeze-up.

1. EMPTY WATER TANKS

Open the low point drain located under the unit on the bottom of the fresh tank to drain (1A). Empty grey water tank by pulling handle to open the valve.

Turn on water pump and run all faucets (hot & cold) until water is purged from lines. Start with the furthest faucet from the pump; shower, vanity, outdoor shower, and kitchen, in that order. Turn water pump off and close all tank drain valves.

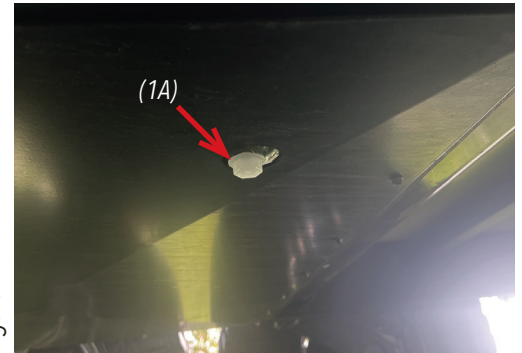


Figure A

2. ADD RV ANTIFREEZE TO WATER LINES

Turn on winterizing valve under the sink by pointing toward the winterizing hose. Insert the hose directly into a bottle of RV antifreeze and turn pump on. Run pump until faucets begin running antifreeze. Turn off faucets. (It is okay if antifreeze runs into your drains and grey water tank. This is desired and helps prevent freeze-up in the drainage system. To winterize the city water fill (pressurized fitting), remove screen/o-ring (1C) from filler fitting. Push center of fitting (2C) to allow antifreeze to be syphoned into city fill until antifreeze squirts out of fitting. Re-install screen & city fill cap. Turn off water pump and turn winterizing valve off.

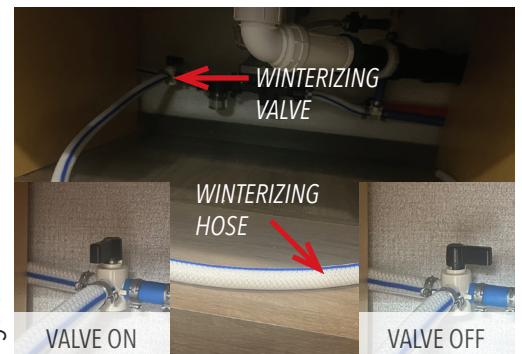


Figure B

3. ADD ANTIFREEZE TO WATER TANK

We also recommend adding a small amount of antifreeze to the fresh water tank through the gravity fill inlet.

THE WATER HEATER IS TANKLESS AND NEEDS NO SPECIFIC WINTERIZING PROCEDURES ASIDE FROM THE ABOVE. THE PUMP WILL PULL ANTIFREEZE THROUGH THE WATER HEATER WHEN PUMPING THROUGH THE WINTERIZING HOSE.

SANITIZE THE PLUMBING SYSTEM BEFORE PUTTING BACK INTO SERVICE.



Figure C